

Lumen Managed & Professional Services ease IT modernization challenges



July 8, 2022

Businesses can better connect, migrate, manage, and modernize key IT systems to drive innovation and grow

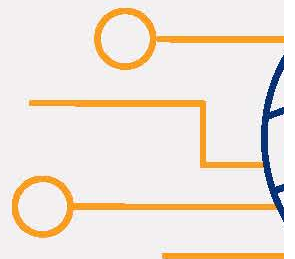
Businesses of all sizes, across all industries, are transforming their technology to support the future of digital work. However, driving new digital experiences includes challenges like attracting and retaining the right talent, being able to quickly respond and adapt to changing business needs, and insufficient IT infrastructure.

“The pandemic has significantly accelerated business imperatives for adopting digital technologies and there are no signs of things slowing,” said Leslie Rosenberg, research vice president, Network Life-Cycle Services and Infrastructure Services, industry analyst firm IDC. “Remote working and changing customer requirements for remote interactions have propelled technology transformation to a top business priority. More than ever, businesses need advice, technical expertise and support from professional services and managed service providers to innovate, scale and drive efficiencies.”

[Continue Reading](#)



Our **exi**
navigate



The Lumen Managed & Professional Services division helps businesses achieve their digital initiatives by providing key expertise across infrastructure, edge, network, cloud, and application enablement software. The team drives operational efficiency with senior-level experts equipped with deep domain knowledge. This expertise reaches across many disciplines, from best practice management, and platform-automation embedded in support processes across cloud and edge environments.

“As the services division of a global technology company, we have the expertise and insight to come in day one and help businesses overcome barriers to innovation, scale, performance, management, and connectivity,” said Steve Grabow, senior vice president, managed and professional services division, Lumen Technologies. “Customers need deeper thinking on digital transformation. Our people can help businesses drive value and growth by enhancing the speed of digital innovation with our managed and professional services.”

As businesses modernize IT systems, it's vital they have the right connections between platforms to optimize workflow patterns and the digital interactions between information and operational technology. And equally important is to have the right people, the right intelligent operating platforms, and right processes to drive these efforts. Experts from Lumen can help with designing, moving, and managing distributed workloads, on our Lumen platform, from public cloud to network edge to help ensure that workers and workloads make the right connections at scale. Lumen Managed & Professional Services enable all applications and services on the Lumen platform with a cohesive service experience from advisory, project and ongoing capabilities across our key practice areas, which include Network & Communications, Edge & Applications, Security and Smart Solutions. This provides alignment for each customer's evolving strategic objectives.

Additional Resources:

Learn more about Lumen Managed & Professional Services at <https://www.lumen.com/en-us/solutions/managed-professional-services.html>.

<https://news.lumen.com/lumen-managed-and-professional-services-ease-it-modernization-challenges>